

TRUSTED SINCE 1926

BONIDE®

- Use on vegetables, fruits, flowers, roses, ornamentals, lawns, trees & shrubs



Japanese Beetles

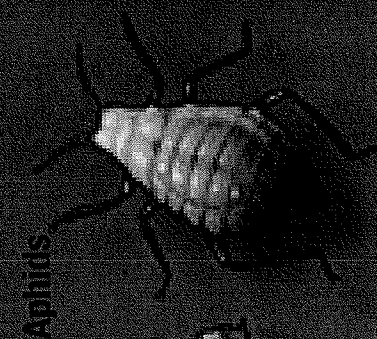
- Keeps working for up to 4 weeks

- Makes up to 16 gallons

Eight™ Insect Control

Vegetable, Fruit & Flower Concentrate

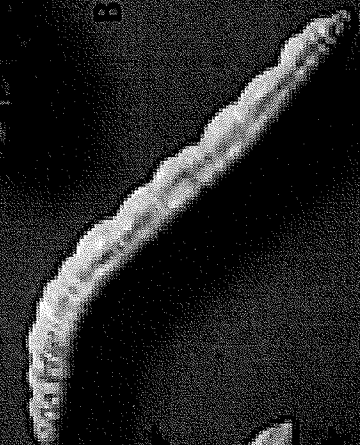
**KILLS OVER
100 NAMED**



Aphids



Bagworms



Fruitworms



Leafminers



Armyworm

Keep Out Of Reach Of Children
 (See back booklet for additional
CAUTION Precautionary Statements and First Aid)
 Net Contents

ACTIVE INGREDIENT

Permethrin (CAS No. 52645-53-1) 2.50%

OTHER INGREDIENTS 97.50%

Total 100.00%

EPA Est. No. 4-NY-1 EPA Reg. No. 4-498

FOR RESIDENTIAL USE ONLY

EIGHT[®] INSECT CONTROL VEGETABLE, FRUIT & FLOWER CONCENTRATE

CONTROLS: ANTS, APHIDS, ASIAN LADYBUGS, BAG WORMS, BEETLES, BORERS, BROWN DOG TICKS, CHINCH BUGS, CLUSTER FLIES, CODLING MOTHS, CRICKETS, EARWIGS, FLEAS, CICADAS (LOCUSTS), GNATS, GRASSHOPPERS, JAPANESE BEETLES, SCALES, THRIPS, WEEVILS, WHITEFLIES, MOLE CRICKETS, SPIDER MITES, TENT CATERPILLARS, MEALYBUGS, LEAFMINERS AND MANY OTHER LISTED INSECTS.

FOR USE ON LISTED: VEGETABLES, FRUITS, FLOWERS, NUTS, LAWNS, TREES, SHRUBS, OUTSIDE SURFACES OF BUILDINGS AND SURROUNDING AREAS.

EPA Est. No. 4-NY-1

EPA Reg. No. 4-408

Buyers Guarantee Limited to Label Claims.

©Bonide Products, Inc. All Rights Reserved

Bonide Products, Inc.
6301 Sutliff Road
Oriskany, NY 13424



It is a violation of Federal law to use this product in a manner inconsistent with its labeling. Not for use on plants being grown for sale or for other commercial use, or for commercial seed production or for research purposes.

DIRECTIONS FOR USE

Do not water the treated area to the point of run-off. Do not make applications during rain. All outdoor applications must be limited to spot or crack-and-crevice treatments only, except for the following permitted uses:

(1) Treatment to soil or vegetation around structures; (2) Applications to lawns, turf, and other vegetation; (3) Applications to building foundations, up to a maximum height of 3 feet. Other than applications to building foundations, all outdoor applications to impervious surfaces such as sidewalks, driveways, patios, porches and structural surfaces (such as windows, doors, and eaves) are limited to spot and crack-and-crevice applications only. Application is prohibited directly into sewer drains, or to any area like a gutter where drainage to sewers, storm drains, water bodies, or aquatic habitat can occur. Do not allow the product to enter any drain during or after application.

For lawns and vegetables, measure the area to be sprayed. Calculate square feet by multiplying length by width. For all other applications, apply as a thorough cover spray. Use a clean sprayer. Carefully measure and mix the amount of concentrate and water as directed. Spray as directed. Thorough coverage is important. Flush sprayer with clean water after each use. Make applications when insects first appear. Repeat applications as directed. See directions for complete insect list. People and pets should not be allowed in treated areas until spray has dried.

Use dilution rates as indicated.
 1 fl. oz. = 6 tsp. or 2 Tbsp.
 8 fl. oz. = 1/2 pt. or 1 cup

DIRECTIONS FOR APPLYING

HOME LAWNS

How to use:	Pests:	
Thoroughly wet down grass a few hours before applying. Home lawns should be no taller than 3 inches at time of application. Slightly more water may be used as long as the amount of product	Ants, Armyworms, Brown Dog Ticks, Chinch Bugs, Crickets, Cutworms, Fleas,	Bent, Bermuda, Bluegrass, Dichondra,

HOME LAWNS Cont.

	Pests:	How to use:
Fescue, Irish Moss, Merion, St. Augustine	Grasshoppers, Japanese Beetle Grubs, Mole Crickets, Sod Webworms, Ticks that may carry Lyme Disease, Leafhoppers	per area is as listed below. For heavy infestations, repeat application after 2 weeks. Do not exceed 16 applications per season. For ants, crickets and grasshoppers, use 2 fl. oz. in 3 gallons of water to cover 1,000 sq. ft. For other listed insects, use 6 fl. oz. in 10 gals. of water to cover 1,000 sq. ft.

FIRE ANT CONTROL

Individual Mound and Plant Container Treatment

Mix 2 fl. oz. in 3 gals. water and apply as a drench using a sprinkler can. Gently apply 1 gallon of the mixture over the surface of each mound. Thoroughly wet mound and surrounding area of 3 x 4 ft. (12 sq. ft.) For best results apply in cool weather 65°F-80°F, early or late in the day. Treat new mounds as they appear. Pressurized sprays may disturb ants and cause migration which will reduce product effectiveness. **Use the same method as above for the control of Fire Ants that may nest in permanently placed containerized ornamental plants.**

HOUSEPLANTS - INDOORS

To protect plants in residential greenhouses and lathouses, and for indoor landscaping:

	Pests:	How to use:
Ageratum, Ardisia, Aster, Baby's Breath, Begonia, Birdsnest Fern, Bleeding Heart, Carnation, Chrysanthemum, Coleus, Cockscomb, Crown of Thorns, Cyclamen, Dracaena, Dumbcane, English Ivy, Fuchsia, Gladiolus, Grape Ivy, Juniper, Lily, Marigold, Orchid, Palm, Pansy, Peperomia, Petunia, Philodendron,	Aphids, Armyworms, Corn Earworms, Exposed Thrips, Fall Cankerworms, Inchworms, Japanese Beetles, Leafminers, Leafrollers, Mealybugs,	Mix 1 fl. oz. in 1 gal. of water. Contact and residual: Use sufficient spray to obtain full coverage of all foliage. If application is to be made indoors, remove infested plants from living areas prior to application. Use in an area not likely to be occupied by people or pets (particularly fish). After spraying, plants can be returned to original location. Do not use more product than recommended, as this may cause some plant injury. Use with care on ferns, palms and fuchsia. As with all plants listed, especially carnations, chrysanthemums, and roses, there exists a wide

HOUSEPLANTS - INDOORS Cont.

	Pests:	How to use:
Piggy-Back Plant, Poinsettia, Portulaca, Pothos, Prayer Plant, Purple Passion, Rabbits Foot Fern, Rose, Schefflera, Snapdragon, Snake Plant, Statice, Velvet Plant, Verbena, Zinnia	Scales, Spider Mites, Spring Cankerworms, Whiteflies	variety of species and cultivars, and therefore, a wide variety of susceptibility to injury. To ascertain possible phytotoxicity, treat a few plants as described above, wait 24 hours, and check for possible injury. Repeat applications may be necessary to control citrus blackflies on non-bearing citrus, and Adult Japanese beetles on roses. Do not exceed 16 applications per season.
Velvet Plants	Fungus Gnats	

TREES & SHRUBS

	Pests:	How to use:
Arizona Cypress, Azalea, Birch, Cherry, Non-bearing Citrus, Conifers, Elm, English Ivy, Euonymous, Weeping fig, Fir, Honeysuckle, Lilac, Mock-orange, Oak, Palm, Philodendron, Pine, Poinsettia, Tulip Poplar, Rhododendron, Taxus	Aphids, Bagworms, Cicadas (locusts), Exposed thrips, Fall cankerworms, Inchworms, Leafminers, Leafrollers, Locusts, Mealybugs, Spider mites, Whiteflies, Gypsy Moth, Tent Caterpillar, Japanese Beetles	Use 1 fl. oz. in 1 gal. of water. Apply as a thorough spray, wetting leaves and branches to the dripping point. Try to penetrate dense foliage. Spray in the late afternoon or evening, when the temperature ranges from 50° to 75°F and when there is little or no wind. Spray at the first sign of insects. Repeat as necessary; use intervals of 4-8 days. Do not exceed 16 applications per season. Application can be made up to the day of collection.
Cherry, Honeysuckle	Fall webworms	
Conifer	Budworms	
Elm	Elm leaf beetles, Elm spanworms, Fall webworms	
Douglas and Grand Firs	Tussock moths	
Non-bearing Citrus	Citrus black flies	
Oak	Oakworms	
Pine	Pine beetles, Pine moths, Pine needleminers, Needle scales	

On Tent caterpillars, application should be made when caterpillars are young and tents are first noticed. For best results, apply in the late afternoon or evening, when caterpillars have returned to their tents. Wet tents with spray on all sides. A few caterpillars may be seen escaping from the tent; however, they should die within several hours.

ROSES & FLOWERS

	Pests:	How to use:
Ageratum, Aster, Ardisia, Azalea, Baby's breath, Begonia, Birds-nest fern, Bleeding heart, Carnation, Chrysanthemum, Coleus, Common Ninebark and Snowberry, Cockscomb, Crown of thorns, Cyclamen, Dracaena, Dumbcane, English Ivy, Exacum, Fuchsia, Gladiolus, Grape Ivy, Gold Bells, Hypoestes, Ivy, Juniper, Lilac, Marigold, Mock-Orange, Nannyberry, Orchid, Palm, Pansy, Pea Shrub, Peperomia, Petunia, Philodendron, Piggy-back Plant, Poinsettia, Portulaca, Pothos, Prayer Plant, Purple Passion, Rabbits Foot fern, Rhododendron, Rose, Schefflera, Snapdragon, Snake Plant, Statice Velvet Plant, Verbena, Zinnia	Aphids, Armyworms, Bagworms, Cabbage worms, Cicadas (locusts), Corn earworms, Cutworms, Exposed thrips, Fall cankerworms, Fall webworms, Fungus gnats, Inchworms, Japanese beetles, Leafminers, Leafrollers, Locusts, Mealybugs, Scale crawlers, Spring cankerworms, Spider mites, Whiteflies, Rose Chafer, Psyllids, Scale Insects	Use 1 fl. oz. in 1 gal. of water. Apply as a thorough spray, wetting the plants to the dripping point. Try to hit underside of leaves and penetrate dense foliage. Spray in the late afternoon or evening, when the temperature ranges from 50°F to 75°F and when there is little or no wind. Spray at the first sign of insects. Repeat as necessary; use intervals of 4-8 days. Do not exceed 16 applications per season. Application can be made up to the day of collection.

FRUIT & NUT TREES

GENERAL DIRECTIONS

Use 2 fl. oz. in 1 gal. of water. Apply when insects appear. Wet the plants to the dripping point. Try to hit underside of leaves and penetrate dense foliage.

	Pests:	How to use:
Almonds, Pecans	Navel orangeworms, Peach twig borers	Do not make more than 2 applications during hull split and 5 applications per season. Can be applied up to 7 days prior to harvest.
Apples	Green fruitworms, Aphids, Leafrollers (Oblique-banded, Redbanded), Plum curculio, Rosy apple aphids, Spotted tentiform leafminers, Tarnished plant bugs, White apple leafhoppers, Japanese Beetles	Repeat as required to maintain control. Do not make more than 3 applications. Do not apply after petal fall.
Peaches	Borers (Lesser peachtree, Peach twig), Green fruitworms, Plum curculio, Oriental fruit moths, Tarnished plant bugs	Do not apply within 7 days of harvest. Do not make more than 8 applications per season.
Pears (dormant through delayed dormant)	Pear psylla	Apply during the dormant through delayed dormant growth period only. Do not make more than 2 applications per season.
Pears (summer)	Codling Moths, Green fruitworms, Pear psylla, Aphids	Do not make more than 3 applications per season. Can be applied up to 14 days prior to harvest.

VEGETABLES

For all of the following vegetables, apply 1 gallon of finished mix to 1,000 sq. ft.

	Pests:	How to use:
Asparagus (pre-harvest)	Asparagus beetles, Cutworms	Use 1 ½ fl. oz. in 1 gal. Apply for uniform coverage as needed. Do not make more than 4 applications per crop. Can be applied up to 3 days prior to harvest.
(post-harvest)	Larval stages of asparagus beetle, Tarnished plant bug, Lygus bugs and adult Japanese beetle	Treat ferns or bush growth after spear harvest when insects are present.
Celery – See Leafy Vegetables		
Cole Crops: Broccoli, Brussels Sprouts, Cabbage, Cauliflower	Beet armyworms, Cabbage aphids and Loopers, Diamondback Moths, Imported cabbageworms	Use 1 fl. oz. in 1 gal. Apply every 5 days or as needed. Can be applied up to 1 day prior to harvest. Do not make more than 8 applications on Cauliflower, Brussels Sprouts and Broccoli and 10 applications on Cabbage.
Corn – see Sweet Corn		
Cucumber, Melons, Pumpkins, Squash	Flea beetle, Leafhopper	Use 2 fl. oz. in 1 gal. Apply as needed, but not more than 8 applications per season. Can be applied up to day of harvest.
Cucurbits: Balsam pear (bitter melon), Chinese waxgourd (Chinese preserving melon), citron melon, cucumber, gherkin,	Aphids, Cabbage looper, Cucumber beetle (adults), Cutworms, Leafhoppers,	Use 2 fl. oz. in 1 gal. Apply as needed to ensure uniform coverage. Do not exceed 8 applications per season. Can be applied up to the day of harvest.

	Pests:	How to use:
edible gourds: melons including hybrids such as Cantaloupe, Casaba, Crenshaw, Honeydew, Honey Balls, Mango melon, Muskmelon, Persian melon, Pumpkin, Summer & Winter Squash, Watermelon	Leafminers, Melonworms, Pickleworm, Plant bugs, Squash bugs	
Eggplant	Colorado potato beetles, Vegetable leafminers	Use 3 fl. oz. in 1 gal. Apply for uniform coverage as needed. Do not exceed 16 applications. Can be applied up to 3 days prior to harvest.
Horseradish (Foliar application)	Imported crucifer weevils	Use 3 fl. oz. in 1 gal. Apply as needed. Do not exceed 3 foliar applications. Can be applied up to 22 days prior to harvest.
Head Lettuce	Corn Earworms, Beet armyworms, Loopers (Alfalfa, Cabbage), Tobacco budworms	Use 2 fl. oz. in 1 gal. Apply every 5-10 days as needed. Do not make more than 10 applications per season. Can be applied up to 1 day prior to harvest.
<u>Leafy Vegetables:</u> Amaranth, Arrugula, Celery, Celtuce, Chervil, Com salad, Chrysanthemum (edible-leaved and garland), cress (garden and upland), Dandelion, Dock, Endive, Fennel, Lettuce (head and leaf), Okra, Parsley, Purslane (garden and winter), Rhubarb, Spinach, Swiss chard	Alfalfa looper, Aphids, Beet armyworm, Cabbage looper, Corn earworm, Cutworms, European corn borer, Fall armyworm, Green cloverworm, Southern armyworm, Tobacco budworm, Vegetable leaf miner	Use 2 fl. oz. in 1 gal. Apply every 5 to 10 days as needed. Do not exceed 10 applications per season. Can be applied up to 1 day prior to harvest.

	Pests:	How to use:
Melons – see Cucurbits		
Potatoes	Beet armyworm, Colorado potato beetle, Potato leafhopper, Potato tuberworm, Cabbage looper, Cutworms, European corn borer, Potato psyllid, Tarnished plant bug	Use 1 ½ fl. oz. in 1 gal. Apply as needed. Do not make more than 12 applications. Can be applied up to 7 days prior to harvest.
Peppers	Vegetable leafminers, Cabbage looper, Flea beetle, Corn earworm, Pepper weevil, European corn borer	Use 2 fl. oz. in 1 gal. Apply as needed, but not more than 8 applications per season. Can be applied up to 3 days prior to harvest.
Strawberries, Raspberries, Blueberries	Strawberry weevils, Aphids, Spider mites, Lygus bugs, Flea beetles, Omnivorous leafhopper, Spittlebugs, Japanese beetles, Field crickets, Red Spider, Leafroller, Weevils	Use 1 ½ fl. oz. in 1 gal. Allow 14 days between last application and harvest. Make no more than 8 foliar applications per growing season.
Sweet Corn	Armyworms (Fall, Southern), Corn earworms, European corn borers	Use 1 ½ fl. oz. in 1 gal. Apply every 5 days and when needed, but not more than 6 applications per season. Can be applied up to 1 day prior to harvest.
Tomatoes	Beet and southern armyworm, Tomato pinworm, Tomato fruitworm, Horn worms, Granulate cutworms, Colorado potato beetle, Cabbage looper	Use 1 ½ fl. oz. in 1 gal. Apply as needed for uniform coverage. Do not exceed 8 applications per season. Can be applied up to day of harvest.

NUISANCE PESTS IN OUTDOOR AREAS

GENERAL DIRECTIONS– Use 6 2/3 fl. oz. in 1 quart of water, treating 400 linear feet with a 6-inch spray band.

OUTSIDE SURFACES OF BUILDING

Use this product on Ants, Asian Ladybeetles, Clover Mites, Crickets, Earwigs, Locusts, Millipedes, Sowbugs (pillbugs) to help prevent infestation of buildings, treat the building foundation to a height of 2 to 3 feet, where pests are active and may find entrance. Also, apply as a spot or crack-and-crevice spray to outside surfaces of building, including porches, screens, window frames, eaves, patios, garages, refuse dumps and other areas where these pests congregate or have been seen. Repeat treatment as needed to maintain effectiveness. Do not exceed 24 applications per year.

OTHER OUTDOOR AREAS

Use this product on Ants, Crickets, Earwigs, Fleas, Ticks (**including ticks that may carry Lyme Disease**) for treatment of localized infestations of these insects in areas where there are weeds or bushy non-crop areas, spray infested areas thoroughly. **For ants**, thoroughly wet hills and runways. Repeat application as reinfestations occur. Do not exceed 24 applications per year.

To reduce annoyance from: **Cluster Flies, Flying Moths, Gnats, House Flies, Mosquitoes**. Spray outside surfaces of screens, doors, window frames or wherever these insects may enter the room. Also treat surfaces around light fixtures on porches, in garages, around shrubbery, and other places where these insects alight or congregate. Repeat as necessary. Do not exceed 24 applications per year.

STORAGE AND DISPOSAL

Do not contaminate water, food or feed by storage and disposal.

Storage: Store and transport in an upright position. Store in original container in a cool, dry area away from heat or open flame.

Disposal: *If empty* - Nonrefillable container. Do not reuse or refill this container. Place in trash or offer for recycling if available. *If partly filled* - Call your local solid waste agency for disposal instructions. Never place unused product down any indoor or outdoor drain.

FIRST AID

Have the product container or label with you when calling a poison control center or doctor, or going for treatment.

If inhaled:	<ul style="list-style-type: none">• Move person to fresh air.• If person is not breathing, call 911 or an ambulance, then give artificial respiration, preferably by mouth-to-mouth, if possible.• Call a poison control center or doctor for further treatment advice.
If on skin or clothing:	<ul style="list-style-type: none">• Take off contaminated clothing.• Rinse skin immediately with plenty of water for 15-20 minutes.• Call a poison control center or doctor for treatment advice.
If in eyes:	<ul style="list-style-type: none">• Hold eye open and rinse slowly and gently with water for 15-20 minutes.• Remove contact lenses, if present, after the first 5 minutes, then continue rinsing eye.• Call a poison control center or doctor for treatment advice.
If swallowed:	<ul style="list-style-type: none">• Call a poison control center or doctor immediately for treatment advice.• Have person sip a glass of water if able to swallow.• Do not induce vomiting unless told to do so by the poison control center or doctor.• Do not give anything by mouth to an unconscious person.

PRECAUTIONARY STATEMENTS
HAZARDS TO HUMANS AND DOMESTIC ANIMALS

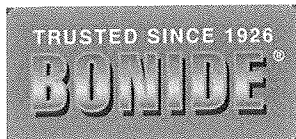
CAUTION: May be harmful if swallowed or absorbed through skin. Avoid breathing spray mist. Avoid contact with skin, eyes or clothing. Wash thoroughly with soap and water after handling.

ENVIRONMENTAL HAZARDS

This pesticide is extremely toxic to fish. Avoid contamination of ornamental fish ponds. Drifts and runoff from treated areas may be hazardous to aquatic organisms in treated areas. To protect the environment, do not allow pesticide to enter or run off into storm drains, drainage ditches, gutters or surface waters. Applying this product in calm weather when rain is not predicted for the next 24 hours will help to ensure that wind or rain does not blow or wash pesticide off the treatment area. Rinsing application equipment over the treated area will help avoid run off to water bodies or drainage systems. This product is highly toxic to bees exposed to direct treatment on blooming crops or weeds. Do not apply this product or allow it to drift to blooming crops or weeds while bees are actively visiting the treatment area.

NOTICE: To the extent consistent with applicable law, buyer assumes all responsibility for safety and use not in accordance with directions.

For information on pesticide products (including health concerns, medical emergencies, or pesticide incidents), call the National Pesticide Information Center at 1-800-858-7378.



Bonide Eight Insect Control Vegetable, Fruit & Flower Concentrate

Safety Data Sheet

according to Federal Register / Vol. 77, No. 58 / Monday, March 26, 2012 / Rules and Regulations

SECTION 1: Identification of the substance/mixture and of the company/undertaking

1.1. Product Identifier

Product name : Bonide Eight Insect Control Vegetable, Fruit & Flower Concentrate
Product code : 4408(2)

1.2. Relevant identified uses of the substance or mixture and uses advised against

Use of the substance/mixture : Insecticide

1.3. Details of the supplier of the safety data sheet

Bonide Products, Inc.
6301 Sutliff Road
Oriskany, NY 13424
T (315) 736-8231
www.bonide.com

1.4. Emergency telephone number

Emergency number : CHEMTREC - 1 (800) 424-9300 and/or 1 (703) 527-3887

SECTION 2: Hazards identification

2.1. Classification of the substance or mixture

Classification (GHS-US)

Flam. Liq. 2 H225

2.2. Label elements

GHS-US labeling

Hazard pictograms (GHS-US)



GHS02

Signal word (GHS-US)

: Danger

Hazard statements (GHS-US)

: H225 - Highly flammable liquid and vapor

Precautionary statements (GHS-US)

: P210 - Keep away from sprays/open flames/ hot surfaces.. - No smoking
P233 - Keep container tightly closed
P240 - Ground/bond container and receiving equipment
P242 - Use only non-sparking tools
P243 - Take precautionary measures against static discharge
P280 - Wear gloves.
P303+P361+P353 - IF ON SKIN (or hair): Remove/Take off immediately all contaminated clothing. Rinse skin with water/shower
P370+P378 - In case of fire: Use foam/water for extinction
P403+P235 - Store in a well-ventilated place. Keep cool
P501 - Dispose of contents/container to in accordance with local/regional/national regulations.

2.3. Other hazards

No additional information available

2.4. Unknown acute toxicity (GHS-US)

No data available

SECTION 3: Composition/information on ingredients

Mixture

Name	Product identifier	%	Classification (GHS-US)
Permethrin	(CAS No) 52645-53-1	2.5	Skin Irrit. 2, H315

Bonide Eight Insect Control Vegetable, Fruit & Flower Concentrate

Safety Data Sheet

according to Federal Register / Vol. 77, No. 58 / Monday, March 26, 2012 / Rules and Regulations

SECTION 4: First aid measures

4.1. Description of first aid measures

- First-aid measures general : Never give anything by mouth to an unconscious person. If you feel unwell, seek medical advice (show the label where possible).
- First-aid measures after inhalation : Assure fresh air breathing. Allow the person to rest.
- First-aid measures after skin contact : Rinse skin with water/shower. Remove/Take off immediately all contaminated clothing.
- First-aid measures after eye contact : Rinse immediately with plenty of water. Obtain medical attention if pain, blinking or redness persist.
- First-aid measures after ingestion : Rinse mouth. Do NOT induce vomiting. Obtain emergency medical attention.

4.2. Most important symptoms and effects, both acute and delayed

- Symptoms/injuries : Not expected to present a significant hazard under anticipated conditions of normal use.

4.3. Indication of any immediate medical attention and special treatment needed

No additional information available

SECTION 5: Firefighting measures

5.1. Extinguishing media

- Suitable extinguishing media : Foam. Dry powder. Carbon dioxide. Water spray. Sand.

5.2. Special hazards arising from the substance or mixture

- Fire hazard : Highly flammable liquid and vapor.
- Explosion hazard : May form flammable/explosive vapor-air mixture.

5.3. Advice for firefighters

- Firefighting instructions : Use water spray or fog for cooling exposed containers. Exercise caution when fighting any chemical fire. Avoid (reject) fire-fighting water to enter environment.
- Protection during firefighting : Do not enter fire area without proper protective equipment, including respiratory protection.

SECTION 6: Accidental release measures

6.1. Personal precautions, protective equipment and emergency procedures

- General measures : Remove ignition sources.

6.1.1. For non-emergency personnel

- Emergency procedures : Evacuate unnecessary personnel.

6.1.2. For emergency responders

- Protective equipment : Equip cleanup crew with proper protection.
- Emergency procedures : Ventilate area.

6.2. Environmental precautions

Prevent entry to sewers and public waters. Notify authorities if liquid enters sewers or public waters.

6.3. Methods and material for containment and cleaning up

- Methods for cleaning up : Soak up spills with inert solids, such as clay or diatomaceous earth as soon as possible. Collect spillage. Store away from other materials.

6.4. Reference to other sections

See Heading 8. Exposure controls and personal protection.

SECTION 7: Handling and storage

7.1. Precautions for safe handling

- Precautions for safe handling : Wash hands and other exposed areas with mild soap and water before eat, drink or smoke and when leaving work. Provide good ventilation in process area to prevent formation of vapor. Use only non-sparking tools.

7.2. Conditions for safe storage, including any incompatibilities

- Technical measures : Proper grounding procedures to avoid static electricity should be followed. Ground/bond container and receiving equipment.
- Storage conditions : Keep only in the original container in a cool, well ventilated place away from : children. Keep in fireproof place. Keep container tightly closed.
- Incompatible products : Strong bases. Strong acids.
- Incompatible materials : Sources of ignition. Heat sources.

Bonide Eight Insect Control Vegetable, Fruit & Flower Concentrate

Safety Data Sheet

according to Federal Register / Vol. 77, No. 58 / Monday, March 26, 2012 / Rules and Regulations

7.3. Specific end use(s)

No additional information available

SECTION 8: Exposure controls/personal protection

8.1. Control parameters

No additional information available

8.2. Exposure controls

Personal protective equipment : Avoid all unnecessary exposure.
Hand protection : Wear protective gloves.
Eye protection : Chemical goggles or safety glasses.
Respiratory protection : Wear approved mask.
Other information : When using, do not eat, drink or smoke.

SECTION 9: Physical and chemical properties

9.1. Information on basic physical and chemical properties

Physical state : Liquid
Color : Colourless to white
Odor : Aromatic
Odor threshold : No data available
pH : 6.5 - 7
Relative evaporation rate (butyl acetate=1) : No data available
Melting point : No data available
Freezing point : No data available
Boiling point : No data available
Flash point : No data available
Self ignition temperature : No data available
Decomposition temperature : No data available
Flammability (solid, gas) : No data available
Vapor pressure : No data available
Relative vapor density at 20 °C : No data available
Relative density : 0.9975

9.2. Other information

No additional information available

SECTION 10: Stability and reactivity

10.1. Reactivity

No additional information available

10.2. Chemical stability

Not established. Highly flammable liquid and vapor.

10.3. Possibility of hazardous reactions

Not established.

10.4. Conditions to avoid

Extremely high or low temperatures. Open flame.

10.5. Incompatible materials

Strong acids. Strong bases.

10.6. Hazardous decomposition products

May release flammable gases.

SECTION 11: Toxicological information

11.1. Information on toxicological effects

Acute toxicity : Not classified

Bonide Eight Insect Control Vegetable, Fruit & Flower Concentrate

Safety Data Sheet

according to Federal Register / Vol. 77, No. 58 / Monday, March 26, 2012 / Rules and Regulations

Permethrin (52645-53-1)	
LD50 oral rat	> 383 mg/kg (Rat)
LD50 dermal rat	4000 mg/kg (Rat)
LD50 dermal rabbit	> 2000 mg/kg (Rabbit)

Skin corrosion/irritation	: Not classified pH: 6.5 - 7
Serious eye damage/irritation	: Not classified pH: 6.5 - 7
Respiratory or skin sensitization	: Not classified
Germ cell mutagenicity	: Not classified
Carcinogenicity	: Not classified

Permethrin (52645-53-1)	
IARC group	3 - Not Classifiable
Reproductive toxicity	: Not classified
Specific target organ toxicity (single exposure)	: Not classified
Specific target organ toxicity (repeated exposure)	: Not classified
Aspiration hazard	: Not classified
Potential Adverse human health effects and symptoms	: Based on available data, the classification criteria are not met.

SECTION 12: Ecological information

12.1. Toxicity

Permethrin (52645-53-1)	
LC50 fish 1	0.0025 mg/l 96 h; Salmo gairdneri (Oncorhynchus mykiss)
EC50 Daphnia 1	0.00043 mg/l (48 h; Daphnia magna; Enzyme effect)
LC50 fish 2	0.016 mg/l (96 h; Pimephales promelas)
EC50 Daphnia 2	0.290 mg/l (24 h; Lymnaea sp.)

12.2. Persistence and degradability

Bonide Eight Insect Control Vegetable, Fruit & Flower Concentrate	
Persistence and degradability	Not established.

12.3. Bioaccumulative potential

Bonide Eight Insect Control Vegetable, Fruit & Flower Concentrate	
Bioaccumulative potential	Not established.

Permethrin (52645-53-1)	
BCF fish 1	560 Salmo gairdneri (Oncorhynchus mykiss)
BCF fish 2	480 (Cyprinodon variegatus)
BCF other aquatic organisms 1	0.1 mg/l (>24 h; Algae)
BCF other aquatic organisms 2	1900 (Ostreidae)
Log Pow	3.48 - 6.5
Bioaccumulative potential	High potential for bioaccumulation (Log Kow > 5).

12.4. Mobility in soil

Permethrin (52645-53-1)	
Ecology - soil	Toxic to bees.

12.5. Other adverse effects

Other information	: Avoid release to the environment.
-------------------	-------------------------------------

SECTION 13: Disposal considerations

13.1. Waste treatment methods

Waste disposal recommendations	: Dispose in a safe manner in accordance with local/national regulations. Dispose of contents/container to in accordance with local/regional regulations.
--------------------------------	---

Bonide Eight Insect Control Vegetable, Fruit & Flower Concentrate

Safety Data Sheet

according to Federal Register / Vol. 77, No. 58 / Monday, March 26, 2012 / Rules and Regulations

Additional information : Handle empty containers with care because residual vapors are flammable.
Ecology - waste materials : Avoid release to the environment.

SECTION 14: Transport information

In accordance with DOT

No dangerous good in sense of transport regulations

Additional information

Other information : No supplementary information available.

SECTION 15: Regulatory information

This chemical is a pesticide product registered by the Environmental Protection Agency and is subject to certain labeling requirements under federal pesticide law. These requirements differ from the classification criteria and hazard information required for safety data sheets, and for workplace labels of non-pesticide chemicals. Following is the hazard information as required on the pesticide label:

CAUTION: KEEP OUT OF REACH OF CHILDREN

May be harmful if swallowed or absorbed through skin.

Avoid breathing spray mist.

15.1. US Federal regulations

No additional information available

15.2. International regulations

No additional information available

15.3. US State regulations

No additional information available

SECTION 16: Other information

Other information : None.

Full text of H-phrases: see section 16:

Flam. Liq. 2	Flammable liquids Category 2
Skin Irrit. 2	Skin corrosion/irritation Category 2
H225	Highly flammable liquid and vapor
H315	Causes skin irritation

SDS US (GHS HazCom 2012) - Pesticides

This information is based on our current knowledge and is intended to describe the product for the purposes of health, safety and environmental requirements only. It should not therefore be construed as guaranteeing any specific property of the product.