



**COL-MET®**

# Product Catalog

**Largest Manufacturer  
of Commercial Steel Landscape Edging  
& Galvanized Steel Nursery Sign Holders  
in the Industry**



**Custom Metal Fabrication Since 1957**



Celebrating more than 60 years in the landscape and retail business, COL-MET has served its customers with the utmost care, ensuring that quality customer service isn't just a buzzword – it's a mission statement.

**COL-MET®**

## Our History

*Then* COL-MET began as Oak Cliff Metal in 1957 and primarily manufactured building products for Dallas-Ft. Worth area contractors and businesses. On February 4, 1958 James Collier Sr. obtained a patent for galvanized clip edging beginning a new chapter for the company. In the early 1970s, at the request of local nurseries, Oak Cliff Metal began manufacturing galvanized sign holders. Oak Cliff Metal moved to Garland, Texas in the 1980s and transformed into Collier Metal Specialties. COL-MET then began producing stake type steel lawn edging to offer professionals an affordable, long lasting solution to retain mulch, rock, and stone in various landscape designs. The company moved to their present location in Garland, Texas in the late 1990s and now have expanded production capabilities and a 125,000-square-foot manufacturing facility.

*Now* COL-MET is the largest manufacturer of steel landscape edging and galvanized nursery sign holders in the industry. COL-MET offers steel lawn edging and accessories for retail and wholesale, as well as a full line of galvanized steel sign holders for retail garden centers. COL-MET offers commercial tree rings and a complete line of edging accessories to help with installation and limitless design opportunities. COL-MET products are commonly specified by landscape architects around the country. COL-MET Steel Landscape edging products are available in a variety of heights, thicknesses and finishes.

COL-MET sign holders are made with prime galvanized steel for indoor or outdoor use. Durable galvanized steel and riveted construction will keep the sign holders usable and looking good for years. COL-MET also manufactures a variety of special purpose sign holders designed specifically for garden centers. From botanical plant markers to custom retail sign holders, COL-MET has the capability to produce a sign holder to exact specifications. They offer bedding plant signs, poster holders, table top sign holders, as well as face plates, vinyl cards and china markers. All sign holders can be powder coated in various colors for added customization.

COL-MET products can be found throughout the United States and Internationally.



## COL-MET Steel Edging

COL-MET History.....	IFC
Steel Specification.....	3
Edging Calculator.....	4
Steel Landscape Edging.....	5
Commercial Tree Rings.....	9
Retail Edging Products.....	10
Retail Display.....	11
Retail Edging Accessories.....	12



## COL-MET Steel Signs

Standard Sign Holders.....	15
Custom Holders for Laminated Sheets.....	16
Steel Base Adapter.....	16
Special Purpose Sign Holders.....	17
Bedding Plant Signs.....	18
Vinyl Signs.....	19
Sign Face Options.....	20
Botanical Sign Holders.....	20

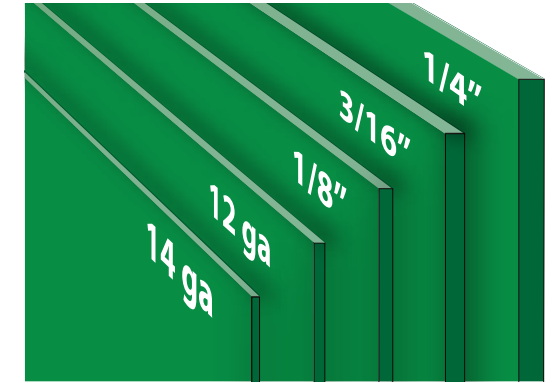


## Steel Specifications

Approximately 5/64" through 1/4" thick (see decimal equivalents)

Hot Rolled low carbon steel ASTM-A-36, ASTM-A-283, and ASTM-A-569.

Hot Rolled steel is soft enough to bend flat on itself in any direction without cracking and ductile enough for shallow drawing. Surface has normal mill oxide. The smooth deoxidized matte finish gives an excellent base for paint. Conforms to a minimum ASTM - A366 with carbon content held to .10 maximum. These materials meet or exceed ASTM and ASME specification. Material is hardness tested to maximum Rockwell of 70 and maximum Webster rating of 15, approximate Brinell hardness is 137. Tensile strength ksi is 58 to 80; yield strength ksi is 36 minimum.



## Commercial Edging

Product Number	Description	Decimal Range	Stake/Pieces	Stake Size	Approx. Lbs. Ea.
1014	10' x 14 ga. x 4" Steel Edging	.0817 - .0677	4	12" x 10 ga.	11
1014-6	10' x 14 ga. x 6" Steel Edging	.0817 - .0677	4	16" x 10 ga.	15
1012	10' x 12 ga. x 4" Steel Edging	.1126 - .0966	4	12" x 10 ga.	15
1012-6	10' x 12 ga. x 6" Steel Edging	.1126 - .0966	4	16" x 10 ga.	20
1011	10' x 1/8" x 4" Steel Edging	.125 min.	4	12" x 10 ga.	17
1011-5	10' x 1/8" x 5" Steel Edging	.125 min.	4	12" x 10 ga.	23
1011-6	10' x 1/8" x 6" Steel Edging	.125 min.	4	16" x 10 ga.	27
1007	10' x 3/16" x 4" Steel Edging	.1875 min.	4	12" x 10 ga.	25
1007-5	10' x 3/16" x 5" Steel Edging	.1875 min.	4	12" x 10 ga.	32
1007-6	10' x 3/16" x 6" Steel Edging	.1875 min.	4	16" x 10 ga.	38
1025	10' x 1/4" x 4" Steel Edging	.25 min.	4	12" x 10 ga.	35
1025-5	10' x 1/4" x 5" Steel Edging	.25 min.	4	12" x 10 ga.	44
1025-6	10' x 1/4" x 6" Steel Edging	.25 min.	4	16" x 10 ga.	52

## Commercial Tree Ring

Product Number	Description	Decimal Range	Stake/Pieces	Stake Size	Approx. Lbs. Ea.
14TR2	2.5' Diameter 14 ga. Tree-Ring-1 Piece	.0817 - .0677	4	12" x 10 ga.	10.5
14TR3	3' Diameter 14 ga. Tree-Ring-1 Piece	.0817 - .0678	4	12" x 10 ga.	13
14TR4	4' Diameter 14 ga. Tree-Ring-2 Piece	.0817 - .0679	7	12" x 10 ga.	17.5
14TR5	5' Diameter 14 ga. Tree-Ring-2 Piece	.0817 - .0680	8	12" x 10 ga.	21
14TR6	6' Diameter 14 ga. Tree-Ring-2 Piece	.0817 - .0681	8	12" x 10 ga.	26

## Paint Application

Electrostatically applied powder coating specially formulated to withstand extended outdoor exposure. This coating is ideally suited for lawn and garden equipment, fencing, playground and recreational equipment. Colors include green, brown, and black. 14 ga. through 1/8" available in a galvanized finish; 3/16" and 1/4" available in a Hot Dipped galvanized finish.

The information contained here is true and accurate to the best of our knowledge. This information is for the specified COL-MET products, and not for use with any other brand of edging. Specification on other products and coatings are available upon request. COL-MET is a registered trademark of Collier Metal Specialties® LTD Garland, Texas USA and cannot be reproduced without written permission.



## (14 ga.) COL-MET Steel Landscape Edging

- Most common residential edging
- Designate color when ordering
- Green, Brown (B), Black (BK), Galvanized (G) or Unpainted (U)
- Easy to shape, bend and form
- Separates planting bed and turf grass
- Allow 8" overlap per section

Product Number	Length	Height	Description	Stake/Pieces	Stake Size	Approx. Lbs. Ea.	Pieces/Pallet	Pallet Weight
1014	10'	4"	14 ga. Steel Edging	4	12" x 10 ga.	11	300	3700
1014-6	10'	6"	14 ga. Steel Edging	4	16" x 10 ga.	15	150	2800

\*10 piece minimum on all edging.  
16" stakes for 6" height edging are standard.



## (12 ga.) COL-MET Steel Landscape Edging

- Heavy duty residential and light commercial edging
- Designate color when ordering
- Green, Brown (B), Black (BK), Galvanized (G) or Unpainted (U)
- Used for retaining stone and mulch, walkways and paths
- Allow 8" overlap per section

Product Number	Length	Height	Description	Stake/Pieces	Stake Size	Approx. Lbs. Ea.	Pieces/Pallet	Pallet Weight
1012	10'	4"	12 ga. Steel Edging	4	12" x 10 ga.	15	150	2400
1012-6	10'	6"	12 ga. Steel Edging	4	16" x 10 ga.	20	150	3400

\*10 piece minimum on all edging.  
16" stakes for 6" height edging are standard.



## Edging Calculator

To allow for 8" overlap: Divide \_\_\_\_\_ feet needed by 9.33 to obtain \_\_\_\_\_ 10' pieces needed



For example, if you have 150' of installation length you will need to divide the 150' by 9.33 which equals 16 - 10' pieces needed



**Toll Free: (800) 829-8225**  
**Email: sales@colmet.com**  
**www.colmet.com**



**(1/8") COL-MET Steel Landscape Edging**

- Heavy duty residential and commercial edging
- Designate color when ordering
- Green, Brown (B), Black (BK), Galvanized (G) or Unpainted (U)
- Used for retaining stone and mulch, walkways and paths
- Allow 8" overlap per section

Product Number	Length	Height	Description	Stake/Pieces	Stake Size	Approx. Lbs. Ea.	Pieces/Pallet	Pallet Weight
1011	10'	4"	1/8" Steel Edging	4	12" x 10 ga.	17	200	3900
1011-5	10'	5"	1/8" Steel Edging	4	12" x 10 ga.	23	150	3450
1011-6	10'	6"	1/8" Steel Edging	4	16" x 10 ga.	27	150	4400

\*10 piece minimum on all edging.  
16" stakes for 6" height edging are standard.

   **COLORS: Green, Brown, Black, Galvanized or Unpainted Available**

**(3/16") COL-MET Steel Landscape Edging**

- Heavy duty commercial edging
- Designate color when ordering
- Green, Brown (B), Black (BK), Galvanized (G) or Unpainted (U)
- Used for industrial paths, driveways, etc.
- Allow 8" overlap per section

Product Number	Length	Height	Description	Stake/Pieces	Stake Size	Approx. Lbs. Ea.	Pieces/Pallet	Pallet Weight
1007	10'	4"	3/16" Steel Edging	4	12" x 10 ga.	25	100	2850
1007-5	10'	5"	3/16" Steel Edging	4	12" x 10 ga.	32	100	3500
1007-6	10'	6"	3/16" Steel Edging	4	16" x 10 ga.	38	100	3850

\*10 piece minimum on all edging.  
16" stakes for 6" height edging are standard.

   **COLORS: Green, Brown, Black, Galvanized or Unpainted Available**



**(1/4") COL-MET Steel Landscape Edging**

- Heavy duty commercial edging
- Designate color when ordering
- Green, Brown (B), Black (BK), Galvanized (G) or Unpainted (U)
- Stake pockets pressed in piece no need for J stake
- Used for industrial paths, driveways, etc.
- Allow 8" overlap per section

Product Number	Length	Height	Description	Stake/Pieces	Stake Size	Approx. Lbs. Ea.	Pieces/Pallet	Pallet Weight
1025	10'	4"	1/4" Steel Edging	4	12" x 10 ga.	35	50	1700
1025-5	10'	5"	1/4" Steel Edging	4	12" x 10 ga.	44	50	2250
1025-6	10'	6"	1/4" Steel Edging	4	16" x 10 ga.	52	50	2550

\*10 piece minimum on all edging.  
16" stakes for 6" height edging are standard.



**Commercial Tree Rings**



Perfect edging around trees or circular planting beds in durable 14 gauge steel

Product Number	Description	Stake/Pieces	Stake Size	Approx. Lbs. Ea.
14TR2	2.5' Diameter 14 ga. Tree-Ring-1 Piece	4	12" x 10 ga.	10.5
14TR3	3' Diameter 14 ga. Tree-Ring-1 Piece	4	12" x 10 ga.	13
14TR4	4' Diameter 14 ga. Tree-Ring-2 Piece	7	12" x 10 ga.	17.5
14TR5	5' Diameter 14 ga. Tree-Ring-2 Piece	8	12" x 10 ga.	21
14TR6	6' Diameter 14 ga. Tree-Ring-2 Piece	8	12" x 10 ga.	26



# Retail Edging Products

## Patented Attached Stake Steel Landscape Edging



Pat. #6345465  
Pat. #6629383

8 ft. and 10 ft. lengths • 14 ga. x 4" wide

Product Number	Width	Height	Description	Approx. Lbs. Ea.	Pieces/Pallet	Pallet Weight
814E	8'	4"	14 ga. Attached Stake Edging	8	300	3200
1014E	10'	4"	14 ga. Attached Stake Edging	11	300	3700



Green, brown, and black powder coat is standard.

- Allow 8" deduction for the overlap connection
- Stakes attached to each piece. Two at each end of the edging. The user snaps stakes off when ready to install.
- Stakes 14 ga. 1 1/2" tapered to a blunt point. 8" long with die formed rib for extra strength.



Point of sale attached to each pallet of attached stake edging

# Retail Display



Product Number	Description	Display Dimensions	Load Beams	Weight Ea. Rack
PLTDR8	8' Display Rack (2 uprights, 3 beams and wood incl.)	108"W x 45"D x 6'T	(3) 9'	165 lbs.
PLTDR10	10' Display Rack (2 uprights, 3 beams and wood incl.)	122"W x 45"D x 6'T	(3) 11'	185 lbs.

### Free display with purchase of all of the following products:

120 pieces of product #10XS	40 pieces of product #14CS	20 pieces of product #144SS
40 pieces of product #14SS	6 pieces of product #25VTC	40 pieces of product #14TRS
40 pieces of product #14EP	20 pieces of product #142SS	

And your choice of product #814 or #1014, both are 300 piece pallets.  
Display also includes P.O.P. material (subject to change) and factory assistance when available.  
Display can be used for parking lot sets, sidewalks or within garden center.

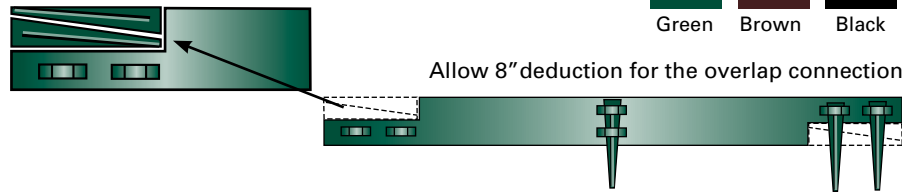


## 4 Ft. Steel Landscaping Edging

Pat. #6345465  
Pat. #6629383

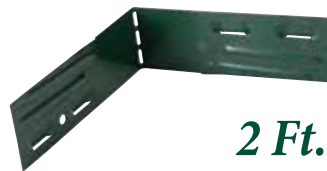
Product Number	Length	Height	Description	Approx. Lbs. Ea.	Pieces/Case	Case Weight
144SS	4'	4"	14 ga. Attached Stake Edging	4	10	42 lbs.

Green, brown, and black powder coat is standard.



Attached stakes can be easily snapped off with pliers before the edging is installed. Four are provided with each piece.

Stakes: 14 ga. x 8" long, tapered from 1 1/2" at the top. A die formed rib provides extra lateral strength.

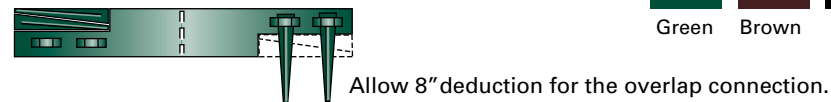


## 2 Ft. Easy-Bend Edging

Pat. #6345465  
Pat. #6629383

Product Number	Length	Height	Description	Approx. Lbs. Ea.	Pieces/Case	Case Weight
142SS	2'	4"	14 ga. Attached Stake Edging	2	10	22 lbs.

Green, brown, and black powder coat is standard.



## End Pieces

Square off and provide stake slots for the end of a line of edging. Includes 2 attached stakes.

Product Number	Description	Approx. Lbs. Ea.	Pieces/Case	Case Weight
14EP	End Piece 14 ga.	0.7	20	15 lbs.

Green, brown, and black powder coat is standard.



## Vinyl Trim Cap

Provides a plastic cover on the top of the edging for swimming pool and other high pedestrian traffic areas.

Product Number	Description	Approx. Lbs. Ea.	Pieces/Case	Case Weight
25VTC	25' Vinyl Trim Cap	1.23	6	9 lbs.

Green, brown, and black is available.



## Tree Ring Sections

For tree rings and circular planting beds.

3 make a 3 ft. diameter ring  
4 make a 4 ft. diameter ring  
5 make a 5 ft. diameter ring

Product Number	Description	Approx. Lbs. Ea.	Pieces/Case	Case Weight
14TRS	Tree Ring Section 14 ga.	4	10	42 lbs.

Green, brown, and black powder coat is standard.



## Corner Stakes

Join two pieces of cut off edging to make a perfect 90° corner.

Product Number	Description	Approx. Lbs. Ea.	Pieces/Case	Case Weight
14CS	Corner Stake 14 ga.	1.1	10	11 lbs.

Green, brown, and black powder coat is standard.



## Splicing Stakes

Attach two pieces of cut off edging and cover the gap where grade changes are made.

Product Number	Description	Approx. Lbs. Ea.	Pieces/Case	Case Weight
14SS	Splicing Stake 14 ga.	0.7	20	13 lbs.

Green, brown, and black powder coat is standard.



## Extra Stakes

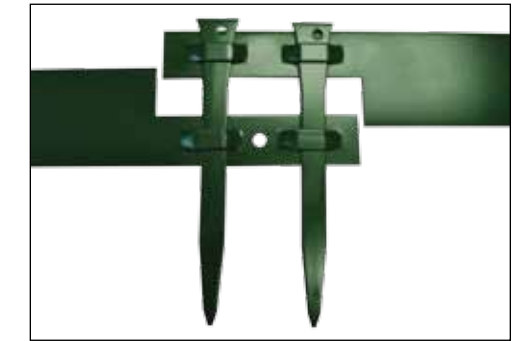
12" x 10 ga. powder coated tapered stake.  
16" x 10 ga. powder coated tapered stake.

Product Number	Description	Approx. Lbs. Ea.	Pieces/Case	Case Weight
10XS	12" Extra Stake	.45	40	18 lbs.
10XS16	16" Extra Stake	.60	40	24 lbs.

Green, brown, and black powder coat is standard.



**COL-MET Steel Landscape Edging** offers an affordable, long lasting solution to retain mulch, rock, and stone in various landscape designs. Steel edging is flexible enough for free contoured shapes yet rigid enough for straight lines to create a clean separation between turfgrass and planting bed.





# Galvanized and Powder Coated Steel Sign Holders

# Standard Face Plate Sign Holders



Flat Face Sign Holders



Double Face Sign Holders

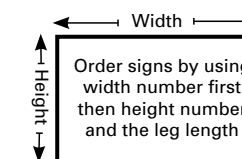


Stacked Sign Holders



Durable galvanized steel and riveted construction will keep the sign holders usable and looking good for years. Use alone as a stake or with a base adapter (sold separately) for a free standing sign.

Product Number	Width	Height	Leg Length	Case Qty.	Case Wt. Lbs.
5418	5"	4"	18"	25	15
4518	4"	5"	18"	25	15
5430	5"	4"	30"	25	19
4530	4"	5"	30"	25	19
5436	5"	4"	36"	25	23
4536	4"	5"	36"	25	23
7518	7"	5"	18"	25	16
5718	5"	7"	18"	25	16
7530	7"	5"	30"	25	25
5730	5"	7"	30"	25	25
7536	7"	5"	36"	25	26
5736	5"	7"	36"	25	26
11718	11"	7"	18"	25	26
71118	7"	11"	18"	25	26
11730	11"	7"	30"	25	31
71130	7"	11"	30"	25	31
11736	11"	7"	36"	25	36
71136	7"	11"	36"	25	36



\*For open top style specify OT after product number.  
Your sign holders can be powder coated in your choice of attractive colors.



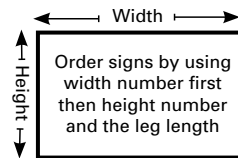
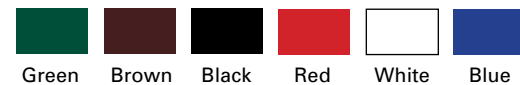
# Custom Holders for Laminated Sheets



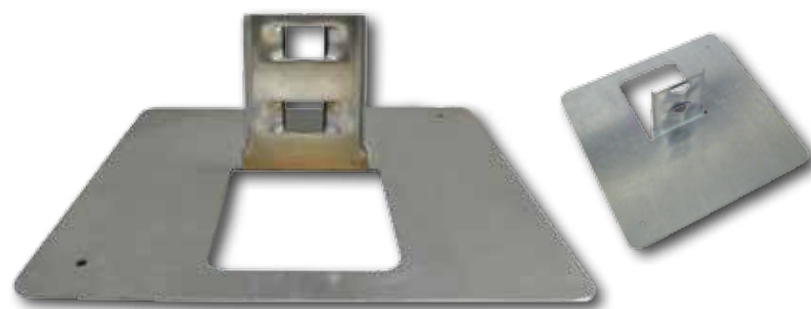
Product Number	Width	Height	Leg Length	Case Qty.	Case Wt. Lbs.
115918	11.5"	9"	18"	25	28
911518	9"	11.5"	18"	25	28
115930	11.5"	9"	30"	25	33
911530	9"	11.5"	30"	25	33
115936	11.5"	9"	36"	25	38
911536	9"	11.5"	36"	25	38

\*For open top style specify OT after product number.

Your sign holders can be powder coated in your choice of attractive colors.



## Galvanized Steel Base Adapter



- Leg snaps into place
  - Keeps sign secured in the base
  - Keeps the sign from leaning
- Sold Separately**

Product Number	Description	Pieces/Case	Case Weight
16BA	10" x 10" Standard Base Adapter	25	42 lbs.
14BA	10" x 10" Heavy Base Adapter	25	52 lbs.

\*Base can also be secured under a pallet.

# Special Purpose Sign Holders

## Table Top Sign Holders

Product Number	Width	Height	Case Qty.	Case Weight
54TT	5"	4"	25	8 lbs.
45TT	4"	5"	25	8 lbs.
75TT	7"	5"	25	10 lbs.
57TT	5"	7"	25	10 lbs.
117TT	11"	7"	25	18 lbs.
711TT	7"	11"	25	18 lbs.
108TT	10"	8"	25	20 lbs.
810TT	8"	10"	25	20 lbs.
1159TT	11.5"	9"	25	25 lbs.
9115TT	9"	11.5"	25	25 lbs.



Self-standing one piece construction

Can be used for both indoor and outdoor displays  
Galvanized or durable powder coat finish available in these attractive colors.



## Sign Face Clips

Product Number	Width	Height	Lbs. Ea.
75TC	7"	5"	.3
117TC	11"	7"	.7



Light galvanized steel clips can be easily hand formed for various purposes. Specify top or bottom clip for open top face plates.

## Double Face Hanging Sign

Product Number	Width	Height	Lbs. Ea.
54DFHS	5"	4"	.4
75DFHS	7"	5"	.6
117DFHS	11"	7"	1.5
1159DFHS	11.5"	9"	1.8

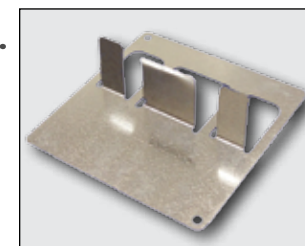


One piece design popular for hanging baskets.

## Poster Holders

Product Number	Description	Case Qty.	Case Weight
16PH	10" x 10" 16 ga. Poster Holder	25	40 lbs.

Holds popular coroplast and corrugated poster displays up to 4' wide x 4' tall.



## Strip Sign Holders

Max. height 12"  
Max. length 4'  
Min. length 2'



Card holder can be attached to any flat surface.

## Spring Clip Sign Holder

Spring clip sign holders will clip to almost any surface from 1/4" to 1 1/2" thick. Double clips can be ordered with any size face plate.



# Bedding Plant Signs



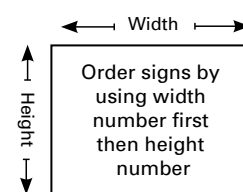
Double face model holds sign cards back to back



Each sign ships flat and easily bends up for usage

Product Number	Width	Height	Description	Case Qty.	Case Weight
B54	5"	4"	One piece sign incl leg w/base	25	34 lbs.
B54D	5"	4"	Double face sign incl leg w/base	25	40 lbs.
B57	5"	7"	One piece sign incl leg w/base	25	37 lbs.
B57D	5"	7"	Double face sign incl leg w/base	25	43 lbs.
B75	7"	5"	One piece sign incl leg w/base	25	37 lbs.
B75D	7"	5"	Double face sign incl leg w/base	25	43 lbs.
B108	10"	8"	One piece sign incl leg w/base	25	49 lbs.
B117	11"	7"	One piece sign incl leg w/base	25	49 lbs.
B117D	11"	7"	Double face sign incl leg w/base	25	67 lbs.

- Durable galvanized steel and riveted construction will keep the sign holders usable and looking good for years.
- Heavy gauge 7" x 7" base plate keeps the sign upright and stable.
- Standard 12" height - maximum 18" leg available.
- Cards included in each case.



# Vinyl Signs

Product Number	Width	Height	Description	Pack Qty.	Pack Weight
VBC H5-4	5"	4"	Border card	25	.3 lbs.
VBC H4-5	4"	5"	Border card	25	.3 lbs.
VSC H5-4	5"	4"	Sale card	25	.3 lbs.
VSC H4-5	4"	5"	Sale card	25	.3 lbs.
PC 5-4	5"	4"	Plain white card	25	.3 lbs.
PLCD 5-4	5"	4"	Plant info card	25	.3 lbs.
VBC H7-5	7"	5"	Border card	25	.5 lbs.
VBC H5-7	5"	7"	Border card	25	.5 lbs.
VSC H7-5	7"	5"	Sale card	25	.5 lbs.
VSC H5-7	5"	7"	Sale card	25	.5 lbs.
PC 7-5	7"	5"	Plain white card	25	.5 lbs.
PLCD 7-5	7"	5"	Plant info card	25	.5 lbs.
VBC H11-7	11"	7"	Border card	25	.9 lbs.
VBC H7-11	7"	11"	Border card	25	.9 lbs.
VSC H11-7	11"	7"	Sale card	25	.9 lbs.
VSC H7-11	7"	11"	Sale card	25	.9 lbs.
PC 11-7	11"	7"	Plain white card	25	.9 lbs.
PLCD 11-7	11"	7"	Plant info card	25	.9 lbs.
PC 10-8	10"	8"	Plain white card	25	1.0 lbs.



## All Vinyl Cards

Cards are .010 thick, pure white, mat finish material and are completely waterproof. Fade resistant red and black ink is print applied for durability when exposed to bright sunlight conditions.

## China Markers

Boxes of 12 each. Waterproof wax pencils for marking vinyl sign cards.



Not compatible with inkjet or laser printers.



## Standard Galvanized Face Plates



### ..... Closed Top Face Plates

To hold the sign cards more secure.

Open top also available

Product Number	Width	Height	Lbs. Ea.
54FP	5"	4"	.20
75FP	7"	5"	.25
117FP	11"	7"	.70
1159FP	11.5"	9"	.80

## Custom Signs Available



### ..... Slotted Clamp-On Face Plates

Contact COL-MET with the size needed for a quote

Slotted to accept 1/2" wide hose clamps. Specify horizontal or vertical slots. Clamps not included.



### ..... Open Top Face Plates

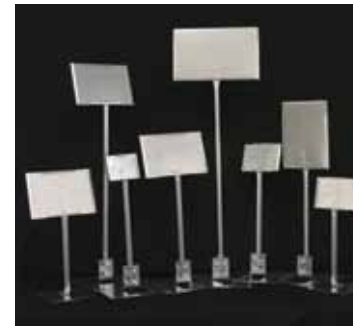
To easily insert and remove sign cards.



### ..... Closed Top Face Plates

To hold the sign cards more secure.

In addition to the standard sizes on page 15. We will make custom sizes to fit all of your needs.



## Leg Lengths Available

6" 12" 18" 24" 30" 36"  
50 minimum

## Botanical Sign Holders

**COL-MET'S BOTANICAL SIGNS BLEND IN WITH THE NATURAL BEAUTY AND WILL ENRICH A GARDEN'S PRESENTATION**

*Signs Are Constructed of Galvanized Steel Material For Years of Use in All Conditions*



**All Botanical Sign Holders are Made to Your Specification of Width, Height and Color**

\*COL-MET does not provide engraved placards shown in images



**Helping Garden Centers Look Their Best!**



www.colmet.com • 800.829.8225



**COLMET<sup>®</sup>**

Phone: 800.829.8225 • Fax: 972.494.1605 • [sales@colmet.com](mailto:sales@colmet.com)

©2017 COLLIER METAL SPECIALTIES LTD



[www.colmet.com](http://www.colmet.com)

