

21724

TO OPEN, CUT HERE!

10 mm Zipper

PINHOLE

Hi-Yield®



Dutch Bulb Food

0.375" Side Seal

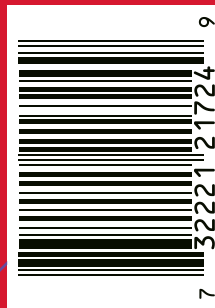
0.375" Side Seal

7-8-5

- Provides Primary Nutrients Necessary For Root Development And To Grow Big, Beautiful Flowers

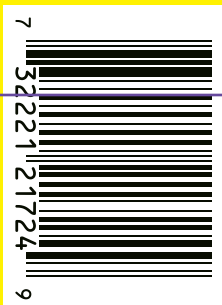
21724

NET WEIGHT 4 LBS. (1.8 KG)



K-Seal

K-Seal



Hi-Yield®

Dutch Bulb Food

21724

K-S

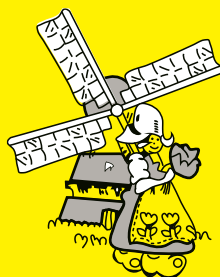
K-S

10 mm Zipper
KEEP OUT OF REACH OF CHILDREN

Hi-Yield®

Dutch Bulb Food

HI-YIELD®DUTCH BULB FOOD is especially formulated to help bulbs flourish like they do in the fertile soils of Holland. **HI-YIELD®DUTCH BULB FOOD** provides primary nutrients necessary for root development and to grow big, beautiful flowers.

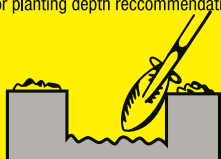


Perfect for use with Tulips, Gladiolus, Iris, Peonies, Crocus, Hyacinths, Cannas, Daffodils, Lillies, Scilla, Ranunculus, Begonias, Oxalis, Gloxinia, Calla (Yellow, Pink Or White), Caladium, Ligridia, Amaryllis, Anemone, Dahlia, and Jonquills. For best results, always select top quality bulbs. As a general rule, plant bulbs their diameter apart and twice the bulb's height deep. Consult the chart below for planting depth recommendations.

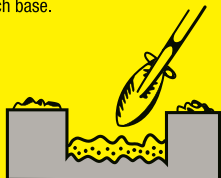
DIRECTIONS FOR USE

NEW PLANTING

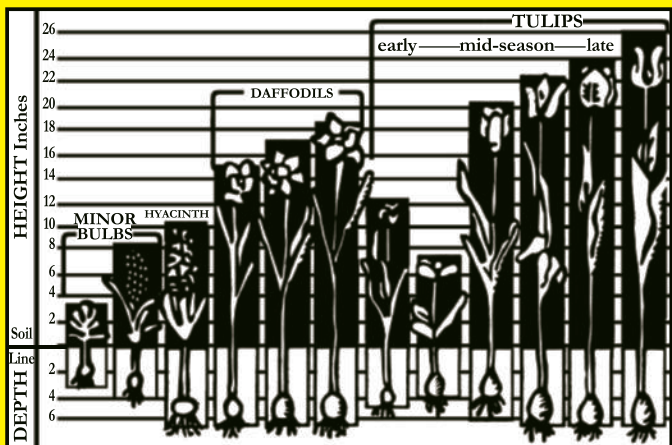
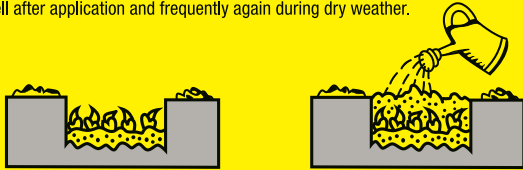
1. Dig a hole little deeper than is recommended for the type of bulb being planted. (See the chart on the side of this bag for planting depth recommendations.)



2. Next, mix the **HI-YIELD®DUTCH BULB FOOD** with the soil just removed from the hole at the rate of 1 rounded teaspoonful per square of bed area being planted, or ¼ cup per 10 square feet of bed area. Refill the hole with just enough of the soil and **HI-YIELD®DUTCH BULB FOOD** mix to obtain the desired planting level, this will allow the bulbs to start root growth into a more nutrient rich base.



3. Place the bulbs and cover with the remaining soil and **HI-YIELD®DUTCH BULB FOOD** mix. Water well after application and frequently again during dry weather.



7-8-5

GUARANTEED ANALYSIS

Total Nitrogen (N).....	7%
3.17% Ammoniacal Nitrogen	
3.83% Urea Nitrogen	
Available Phosphate (P ₂ O ₅).....	8%
Soluble Potash (K ₂ O).....	5%
Derived From: Ammonium Phosphate, Urea, Ammonium Sulfate, Muriate of Potash.	
F370	

ESTABLISHED PLANTS IN BEDS

Apply **HI-YIELD®DUTCH BULB FOOD** evenly over the bed area at the rate of 1 rounded teaspoonful per square foot of bed area at the rate of ¼ cup per 10 square feet of bed area, or 4 cups per 50 square feet. Water in well after application.

NOTE: This product is not recommended for, nor intended for use in container grown plants.

Buyers assume all risks of use, storage and handling of this material not in strict accordance with directions given herewith.

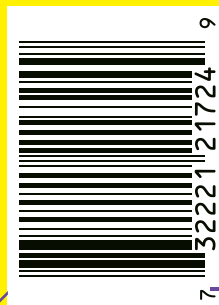
Hi-Yield® is a registered trademark of Voluntary Purchasing Groups, Inc.

Manufactured By:



230 FM 87 • BONHAM, TEXAS 75418
 Product Questions? 855-270-4776

21724-0720-YS



Information regarding the contents and levels of metals in this product is available on the internet at: <http://www.aapfc.org/metals.html>

0.375" Side Seal

0.375" Side Seal

ea

ea