

**DURAEDGE**

*-with-*  
**SHOT BLAST PREP**

**DURAEDGE  
STANDARD  
FINISHES**

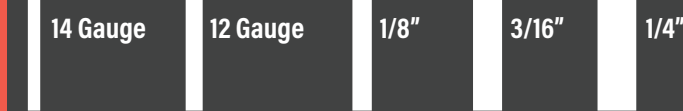


**STANDARD OPTIONS FOR ALL EDGING\***

CUSTOM SIZES AVAILABLE UPON REQUEST.

Standard Top Edge

THICKNESS



Rolled Top Edge  
*(14 gauge only)*

LENGTHS



HEIGHTS



\*OPTIONS ARE SPECIFIC TO EDGE THICKNESS. SEE SPECIFIER FOR DETAILS.

**WARRANTY:**

The J D Russell Company (Hereafter "JDR") warrants our products to be of good quality and will replace materials found defective, providing however, that the buyer shall examine the goods when received and promptly notify JDR of any defect before the materials are used or incorporated into a structure or project for which they are intended. Unless otherwise agreed upon in writing this warranty shall extend only to comply with specifications set forth for materials manufactured and/or provided by JDR. This warranty is in lieu of all others, expressed or implied, and may not be extended or altered by JDR representatives or by interpretation of written sales information or drawings. JDR distributors, their salespersons and representatives may not extend or alter this warranty in any way nor are they authorized to waive or interpret the limitations of this warranty.

**DURAEDGE**

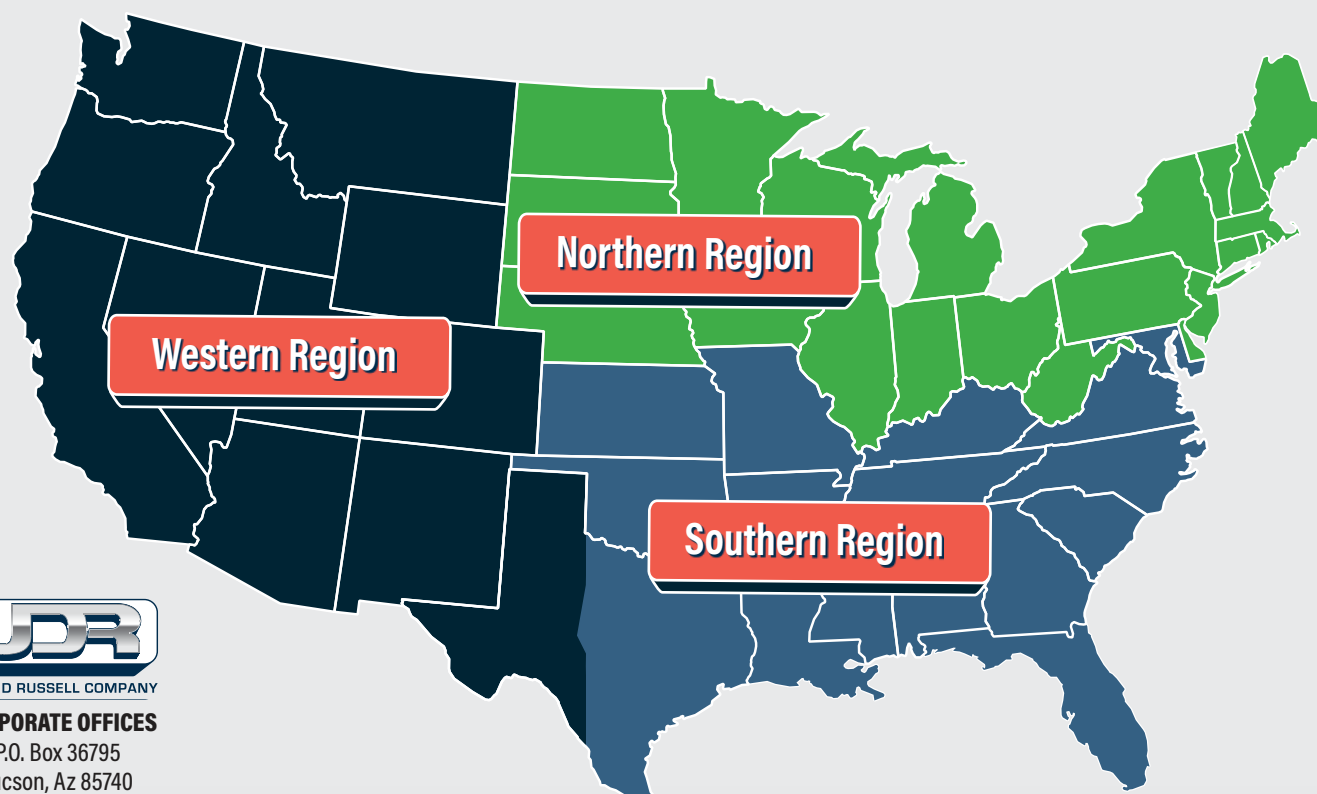
*-with-*  
**SHOT BLAST PREP**

**STEEL LANDSCAPE EDGING**



THE J D RUSSELL COMPANY

Manufactured in the USA



THE J D RUSSELL COMPANY

**CORPORATE OFFICES**

P.O. Box 36795  
Tucson, Az 85740  
(520) 742-6194 • Fax (520) 293-2202

**NORTHERN REGION**

P.O. Box 183471  
Shelby Township, Mi 48318  
(586) 254-8500  
(800) 888-9708  
Fax (586) 254-8555

**SOUTHERN REGION**

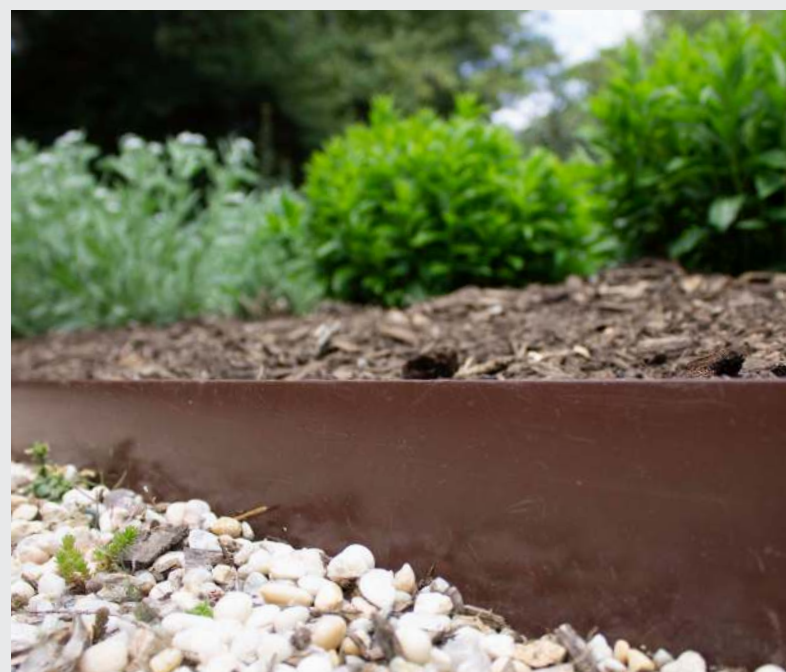
P.O. Box 311  
Farmersville, Tx 75442  
(270) 826-7008  
(800) 888-6872  
Fax (270) 826-7018

**WESTERN REGION**

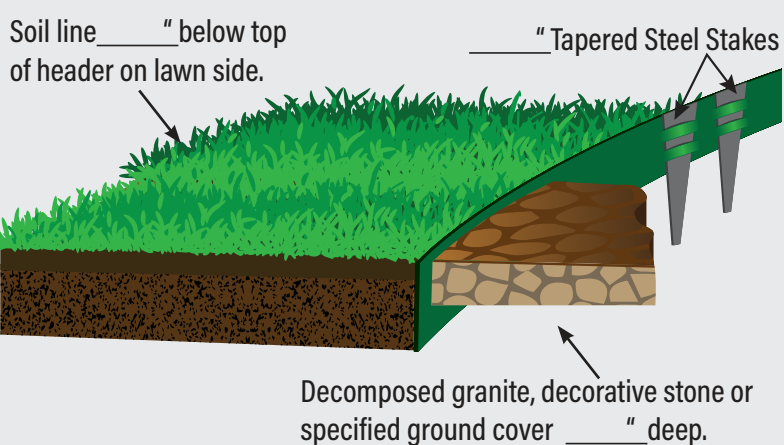
5488 Reflex Drive  
Las Vegas, Nv 89156  
(520) 742-6194  
(800) 888-7425  
Fax (520) 293-2202

**SOUTHEASTERN WAREHOUSE & DISTRIBUTION**

Jacksonville, Fl 32258  
(800) 888-6872  
Fax (270) 826-7018



The J D Russell Company is able to custom fabricate DURAEDGE to meet your specific needs. We keep common sizes and colors readily available.

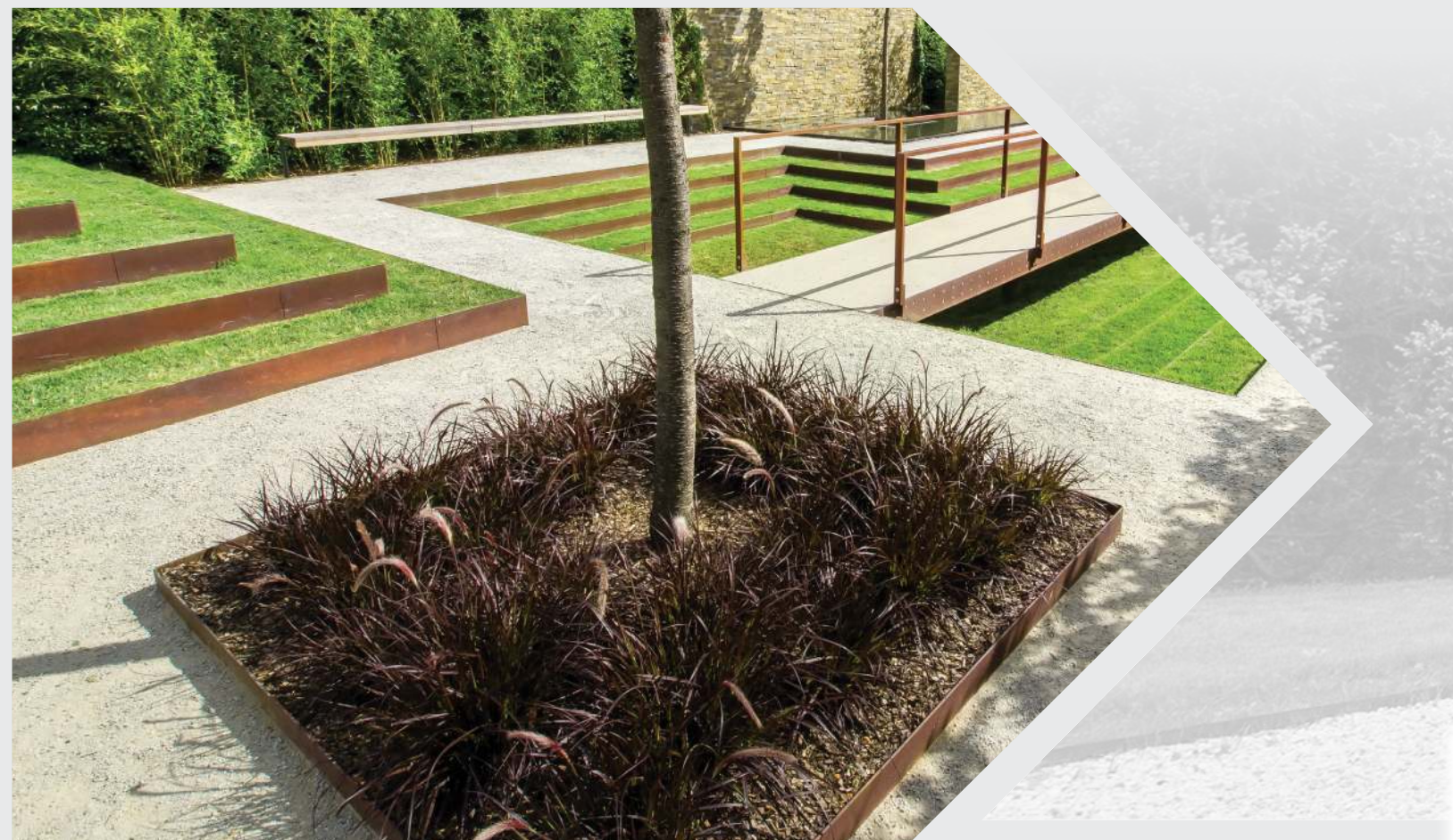


**STEEL HEADER DETAIL**

All steel curbing shall be \_\_\_ thick x \_\_\_ deep with \_\_\_ stakes per section, painted \_\_\_ at the factory as manufactured by **The J D Russell Company** and under its tradename, **DURAEDGE**

[jdrussellco.com](http://jdrussellco.com)  
[contact@jdrussellco.com](mailto:contact@jdrussellco.com)

Use DURAEDGE Accessories for Tree Rings, End Pieces, and other supplies to customize your DURAEDGE design.



## SPECIFICATIONS

SIZE	14 ga	12 ga	1/8"	3/16"	1/4"
DEPTH	4", 6"	4"	4", 6"	4", 6"	5", 6"
LENGTH	8', 10'	10'	16'	16'	16'
ACTUAL COVERAGE					
8Ft	7'- 4"	-	-	-	-
10Ft	9'-4"	9'-4"	-	-	-
16Ft	-	-	15"-4"	15"-4"	15"-4"
NUMBER OF STAKES (PER PIECE)					
8Ft	4	-	-	-	-
10Ft	4	4	-	-	-
16Ft	-	-	6	6	7
STAKE DEPTH	12", 14"	12", 14"	12", 14", 16"	16"	16"

### 14 gauge

Lightweight, low cost residential or commercial edging installs quickly and easily allowing imaginative free form design.

### 12 gauge

Possesses the durable, heavy duty characteristics of 1/8" edging while providing the lightweight, conventional installation properties similar to the 14 ga in the shorter 10' lengths.

### 1/8"

Versatile, lightweight commercial edging. Providing economical durability and uniformity to flower beds and ground cover separation.

### 3/16"

General purpose commercial edging, most commonly used in walkways, driveways and perimeter strips providing strength and continuity to all landscape designs.

### 1/4"

Heavy duty edging for use where straight lines are essential. Ideal for rock and gravel retention on pathways and where erosion control of blacktop driveways and parking lots is required.

**DURAEDGE** products are available unpainted, galvanized or in electrostatically applied green, black or brown powder coat paint.

**DURAEDGE** hot dipped galvanized is recommended where highly corrosive conditions exist like coastal areas.

Compared to wood and plastic edging, steel will not become brittle or decay. It is not easily damaged by maintenance equipment and is less expensive when compared with it's longevity and labor saving installation costs.

**DURAEDGE** edging and accessories provide a comprehensive approach to your landscaping needs while assuring a quality, professional landscape project.



Hot rolled American-made steel with an electrostatically applied powder coat surface paint. Unpainted and hot-dipped galvanized finishes available.

## SHOT BLAST STEEL PREPARATION

THE J D RUSSELL COMPANY USES AN EXCLUSIVE 3 STAGE COATING PROCESS.

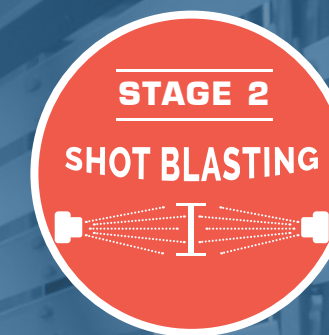
### STAGE 1

After the raw steel is made into punched edging, it's treated with a detergent pre-wash. This wash removes oils, grease and hard to see contaminants from handling and readies the steel for stage 2 - Shot Blasting.



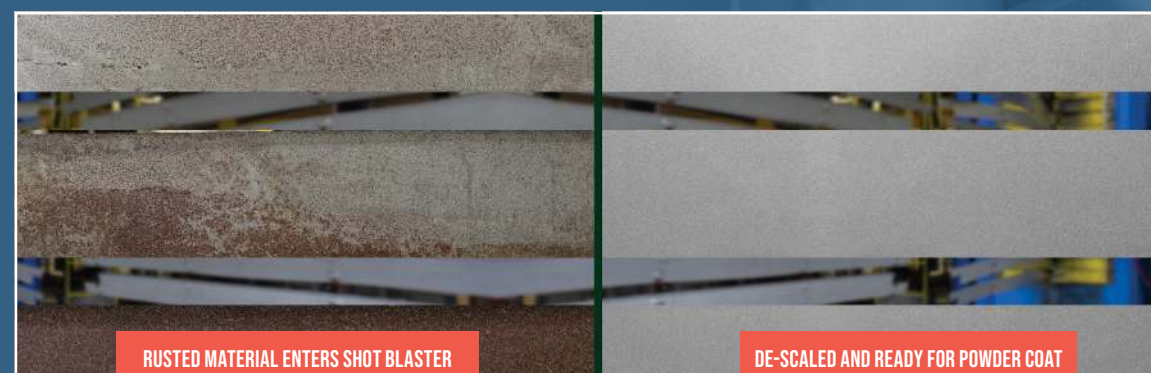
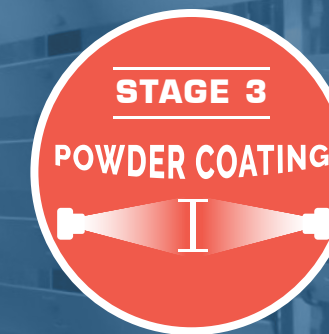
### STAGE 2

Shot blasting is a mechanical method of propelling abrasive material using a centrifugal wheel to remove surface contamination, scale and other impurities from steel prior to powder coating. The J D Russell Company is the first and only landscape edging manufacturer in the nation to use the Blastec shot blast system prior to powder coating.



### STAGE 3

After being completely cleaned and shot blasted, the edging is coated with a high quality TGIC durable powder coating that is compliant to ASTM standards. It is then baked to a highly durable finish. This coating protects the steel from rust and corrosion caused by humidity, salt spray or sunlight insuring longevity and a high end look for many years to come.



# DURARUST

A-588 STEEL

## SELF WEATHERING STEEL

"Weathering steel" is a group of steel alloys developed to eliminate the need for painting. A stable rusted appearance is achieved after months/years of oxidation. While surface oxidation of weathering steel can take upwards of six months, treatments can accelerate this process.

DURARUST is our self-weathering version of DURAEDGE. It's weathered surface protects deeper penetration when left exposed, increasing its resistance to atmospheric corrosion when compared with other steels. The rust finish is a popular alternative to painted edge installations for an industrial or more rustic appearance, or when edging is sought to recede within its natural surroundings.



## DURAEDGE ACCESSORIES



**STEEL STAKES** - 40 per pack. Available in these gauges & lengths: 10-11 ga. x 12" or 14" lengths or 3/16" x 16" length.

**START OR END SECTIONS** - Should be used at the beginning and end of your edging bed to give a uniform appearance. Each section comes in a 2' length and includes 2 stakes. (In all gauges & thicknesses).

**J-STAKES** - Used on an end piece or splicer for cut edging. (In all gauges & thicknesses).

**CORNERS** - Inside or outside are perfect to use whenever a 90 degree angle is desired. Inside corners have the stake pockets on the outside of the edging. Outside corners have the stake pockets inside the edging. Each corner section is 2' long; two stakes are included. (In all gauges & thicknesses).