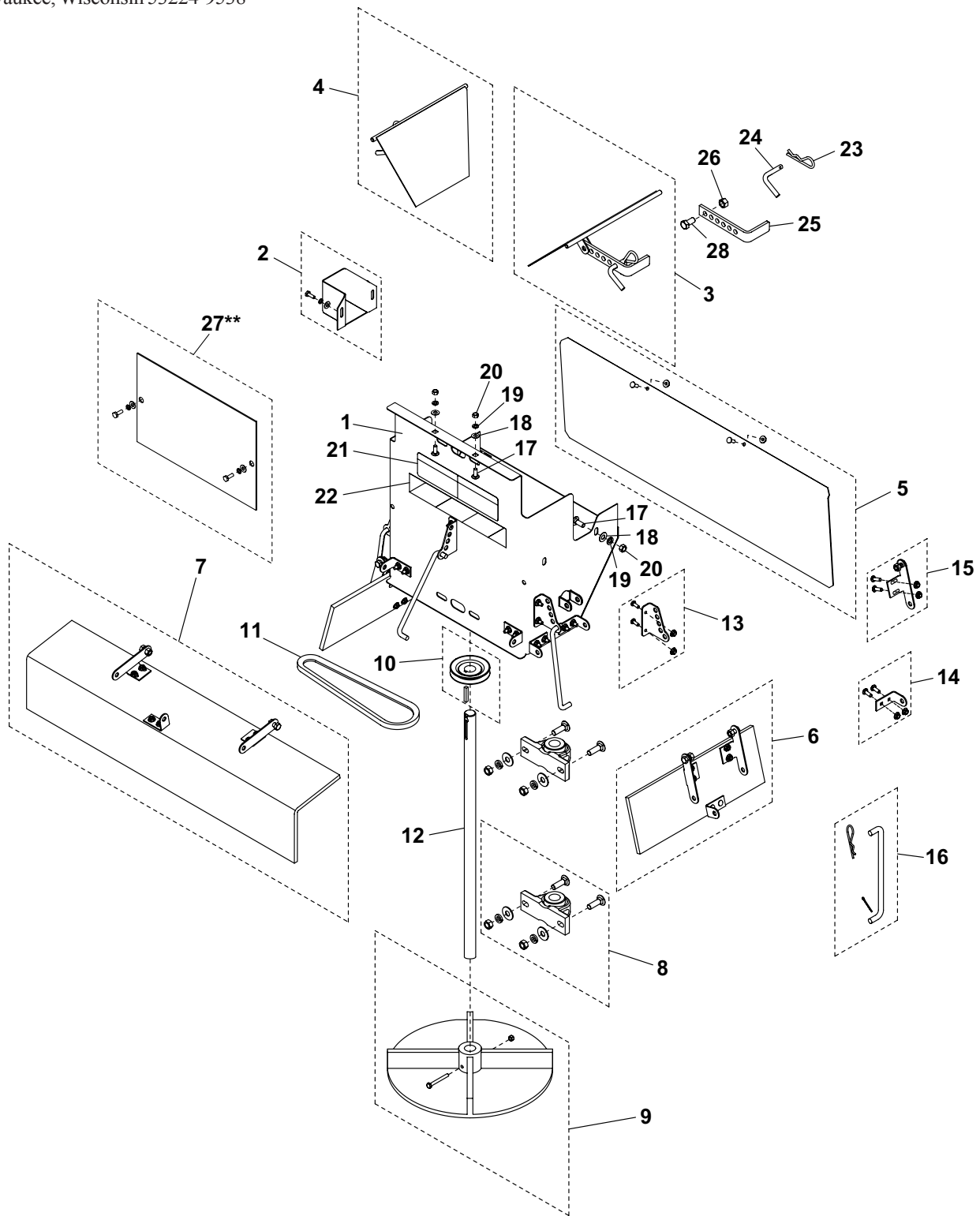




ICE BREAKER™ Center Belt Drive Chute Assembly Parts List 95424, 95425, 95426, 95427

WESTERN PRODUCTS
P.O. Box 245038
Milwaukee, Wisconsin 53224-9538

March 3, 2005
Lit. No. 95490



This parts list is for WESTERN® ICE BREAKER Hopper Spreaders with serial numbers 0303 and higher.

ICE BREAKER™ Center Belt Drive Chute Assembly Parts List

ICE BREAKER Center Belt Drive Chute Assembly Parts Numbers			
Part	Description	Part	Description
95424	14" Mild Steel, Belt Drive	95426	26" Mild Steel, Belt Drive
95425	14" Stainless Steel, Belt Drive	95427	26" Stainless Steel, Belt Drive

ICE BREAKER Center Belt Drive Chute Assembly Parts List							
Item	Part	Qty	Description	Item	Part	Qty	Description
1*		1	Chute Housing	13	94887	3	Adjustment Bracket Kit
2	95478	1	Output Guard Kit, Mild Steel	14	94888	9	Baffle Tab Kit
2	95479	1	Output Guard Kit, Stainless Steel	15	95234	6	Hinge Kit, Rear and Side Baffles
3	95480	1	Internal Baffle Passenger Side Kit, Mild Steel	16	94889	3	Baffle Adjustment Rod Kit
3	95481	1	Internal Baffle Passenger Side Kit, Stainless Steel	17	95569	4	3/8"-16 x 1" Carriage Bolt, Stainless Steel
4	95482	1	Internal Baffle Driver Side Kit Mild Steel	18	91123	4	3/8" Plain Washer, Stainless Steel
4	95483	1	Internal Baffle Driver Side Kit Stainless Steel	19	91282	4	3/8" Lock Washer, Stainless Steel
5	95484	1	Front Deflector Kit, Mild Steel	20	91431	4	3/8"-16 Hex Nut, Stainless Steel
5	95485	1	Front Deflector Kit, Stainless Steel	21	68595	1	Label – Information (Control)
6	95486	2	Side Deflector Kit	22	68737	1	Reflective Strip (Red/White)
7	95487	1	Rear Deflector Kit	23	91959	5	3/32" x 2-1/4" Hairpin Cotter
8	95488	2	Bearing Kit, Chute	24	65206	2	Adjustment Pin
9	94513	1	Spinner Service Kit, 14.5" Poly	25	65203	2	Baffle Handle, Mild Steel
10	95489	1	Pulley Kit, Chute	25	67355	2	Baffle Handle, Stainless Steel
11	95418	1	Belt	26	67368	2	3/8"-16 Hex Jam Locknut, Stainless Steel
12	95420	1	Shaft, 14" Chute	27**	95505	1	Access Panel Kit, Mild Steel
12	95421	1	Shaft, 26" Chute	27**	95506	1	Access Panel Kit, Stainless Steel
				28	91015	2	3/8"-16 x 1" Hex Cap Screw, Stainless Steel

* = Not Available as a Service Item

** = 26" Chutes Only

Copyright © 2005 Douglas Dynamics, L.L.C. All rights reserved. This material may not be reproduced or copied, in whole or in part, in any printed, mechanical, electronic, film or other distribution and storage media, without the written consent of Western Products. Authorization to photocopy items for internal or personal use by Western Products outlets or spreader owner is granted.

Western Products reserves the right under its product improvement policy to change construction or design details and furnish equipment when so altered without reference to illustrations or specifications used. Western Products and the vehicle manufacturer may require and/or recommend optional equipment for spreaders. Do not exceed vehicle ratings with a spreader. Western Products offers a limited warranty for all spreaders and accessories. See separately printed page for this important information. The following are registered (®) and unregistered (™) trademarks of Douglas Dynamics, L.L.C.: WESTERN®, ICE BREAKER™.

Printed in U.S.A.